

Object 8. *Pecado Original-SOKRAM-Ordes 2012*
 Characterization of MATERIALS-PAINTS and SUPPORT – January 2020

lacuna	
flacking	
Corrosion	
Biological colonization	

X-ray diffraction
 Gypsum in samples of renders and concrete

SEM-OPTIC MICROSCOPY

On paints and renders

- gypsum crystals
- Biological growth

On balaustrade

- Corrosion of the *grey cast iron* ($FeOOH$ precipitation)

SOLUBLE SALTS EXTRACTION

Contents up to **200 mg gypsum /100 g** in some samples of disaggregated renders and paint layers

PRINCIPAL DETERIORATION FACTORS

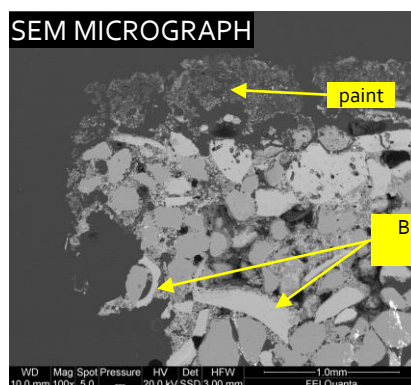
influence of the nearby river (high humidity, rise of capillary water, sulfate source?)

Climate (high rainfall)

Cements with high gypsum content?

Structural problems of the walls: many sub-vertical fractures affect the renders and the brick wall

Use of aggregates of marine or river origin (source of sulfates?)



This document was produced within the project ***Conservation of Art in Public Spaces (CAPuS)***.

Authors:

Teresa Rivas Brea, Enrique Alonso Villar, Santiago Pozo Antonio- UNIVERSIDADE DE VIGO (SPAIN)



Education, Audiovisual and
Culture Executive Agency
Erasmus+: Higher Education-Knowledge
Alliances, Bologna Support, Jean Monnet

CAPuS project has received funding from the
European Commission, Programme Erasmus+
Knowledge Alliances 2017, Project N°
588082-EPP-A-2017-1-IT-EPPKA2-KA

The European Commission's support for the production of this publication does not constitute an endorsement of the contents, which reflect the views only of the authors, and the Commission cannot be held responsible for any use which may be made of the information contained therein.