

Object 7. *Escarabajo Pelotero*-NOVE NOEL-Ordes 2012

Characterization of DETERIORATION FORMS– January 2020

Colour modification (fading)

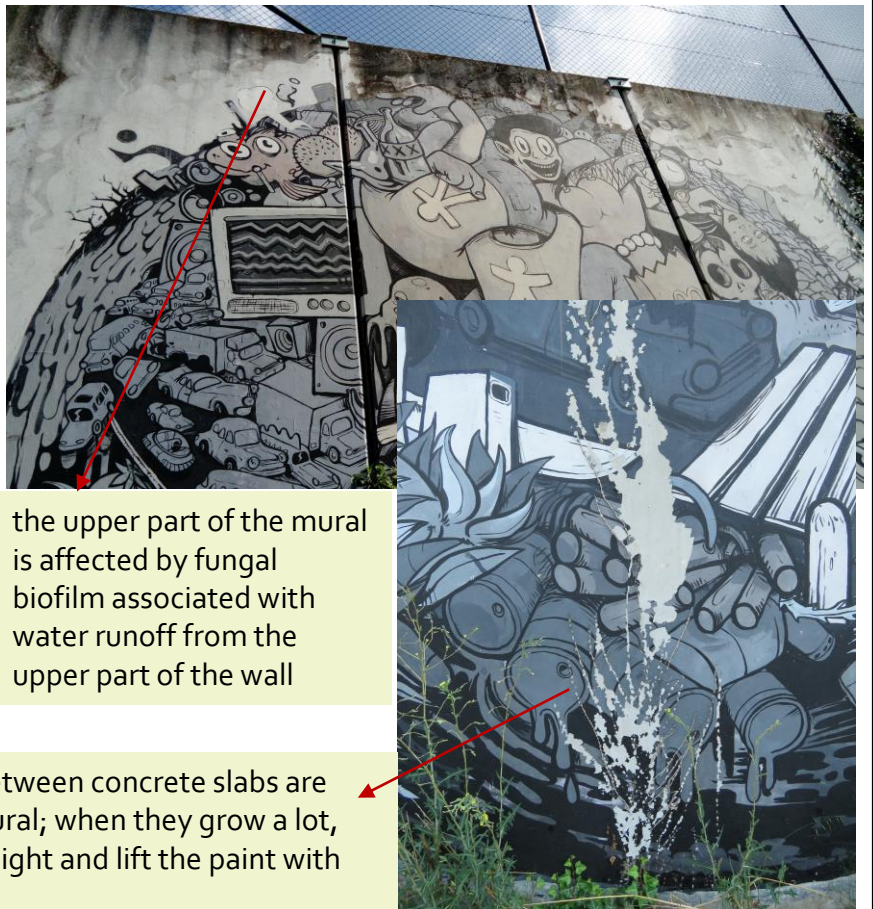
At present, no colors are clearly distinguished.



Biological colonization



Vascular plants (vines) growing between concrete slabs are upholstering large areas of the mural; when they grow a lot, they break off due to excess of weight and lift the paint with their roots.



the upper part of the mural is affected by fungal biofilm associated with water runoff from the upper part of the wall

This document was produced within the project ***Conservation of Art in Public Spaces (CAPuS)***.

Authors:

Teresa Rivas Brea, Enrique Alonso Villar, Santiago Pozo Antonio- UNIVERSIDADE DE VIGO (SPAIN)



Education, Audiovisual and
Culture Executive Agency
Erasmus+: Higher Education-Knowledge
Alliances, Bologna Support, Jean Monnet

CAPuS project has received funding from the
European Commission, Programme Erasmus+
Knowledge Alliances 2017, Project N°
588082-EPP-A-2017-1-IT-EPPKA2-KA

The European Commission's support for the production of this publication does not constitute an endorsement of the contents, which reflect the views only of the authors, and the Commission cannot be held responsible for any use which may be made of the information contained therein.