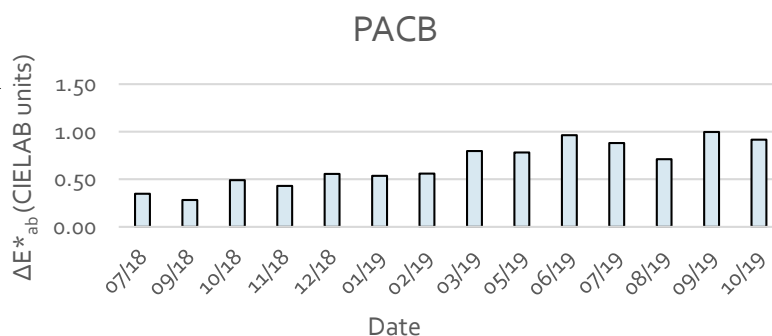
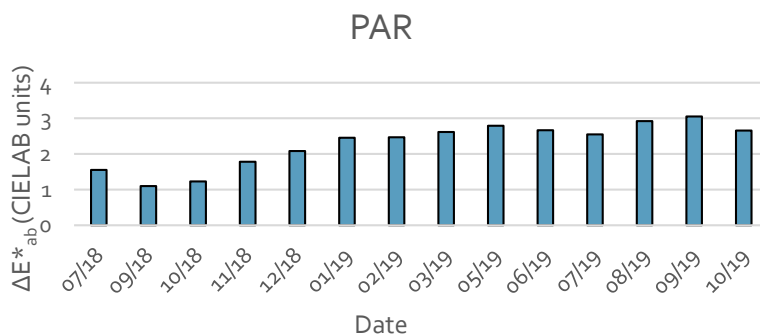
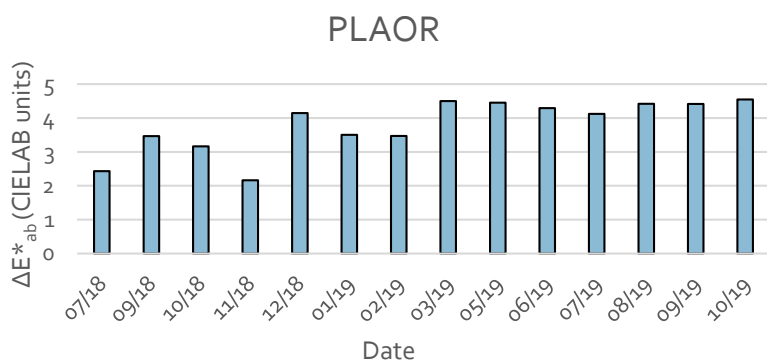
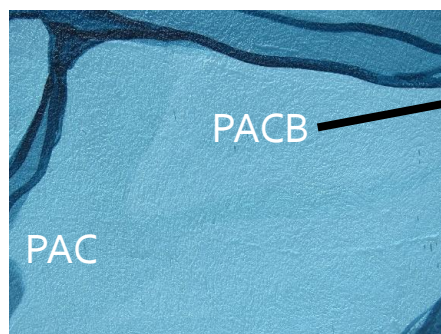
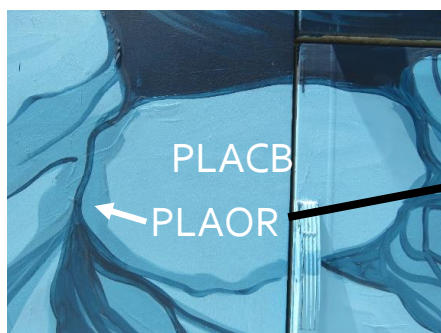
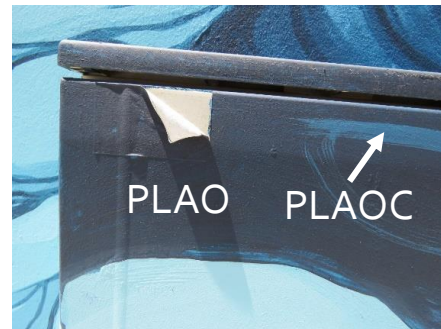
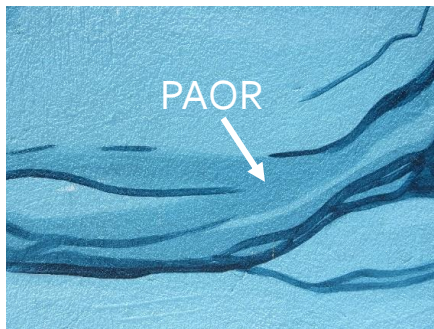


Object 20. *A orixe 2-MOU-Carballo 2018*
 Colour Durability Monitoring – following time (one year)
 ΔE^*_{ab} – CIE S 0.14-4/E:2007 -January 2020



The least resistant paint is PLAOR and PAOR (the same paint but applied on different supports (PLAOR on plastic and PAOR on concrete)). The rest of the paints had $\Delta E^*_{ab} < 3$ CIELAB units (imperceptible color change by an expert eye*). All paints showed an oscillating change during time.

REFERENCES:

CIE S 014-4/E:2007. Colorimetry Part 4: CIE 1976 L*a*b* Colour Space, Commission Internationale de l'éclairage, CIE Central Bureau, Viena, 2007.

*W. Mokrzycki, M. Tatol, Color difference ΔE^*_{ab} survey. Mach Graph Vis. 20 (2011) 383–411.

This document was produced within the project ***Conservation of Art in Public Spaces (CAPuS)***.

Authors:

Teresa Rivas Brea, Enrique Alonso Villar, Santiago Pozo Antonio- UNIVERSIDADE DE VIGO (SPAIN)



Education, Audiovisual and
Culture Executive Agency
Erasmus+: Higher Education-Knowledge
Alliances, Bologna Support, Jean Monnet

CAPuS project has received funding from the
European Commission, Programme Erasmus+
Knowledge Alliances 2017, Project N°
588082-EPP-A-2017-1-IT-EPPKA2-KA

The European Commission's support for the production of this publication does not constitute an endorsement of the contents, which reflect the views only of the authors, and the Commission cannot be held responsible for any use which may be made of the information contained therein.